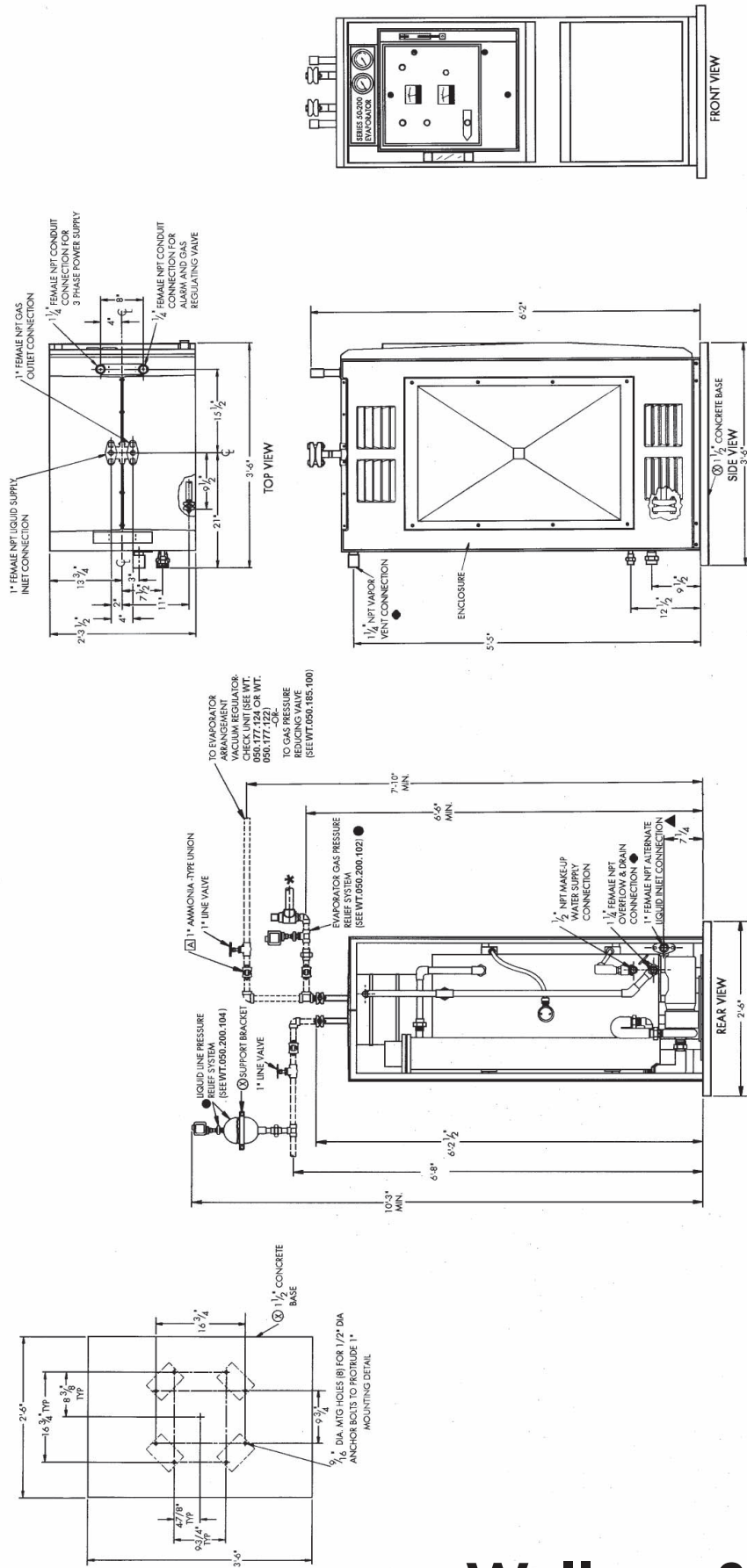


Series 50-200 Evaporator



- NOTE:**
- ⊗ ALL PIPING AND FITTINGS TO BE SUPPLIED BY CUSTOMER. USE SCHEDULE 80 SEAMLESS CARBON STEEL PIPE WITH 3000 LB. FORGED STEEL FITTINGS. FOR REMOVAL OF CYLINDER, MINIMUM CEILING HEIGHT MUST BE 10'-0" PLUS LIFTING GEAR. FOR REMOVAL OF CABINET, ALLOW 15" MINIMUM SIDE CLEARANCE.
 - ⊠ ACCESSORY ITEM FURNISHED ONLY IF SPECIFICALLY LISTED IN QUOTATION.
 - SURFACE TEMPERATURE MAY REACH 212° F.
 - ▲ USE WHEN 2 OR MORE EVAPORATORS ARE MANIFOLDED. FOR 1 EVAPORATOR CONNECTION MAY BE AN ALTERNATE TO TOP INLET.
 - * THE RELIEF LINE MUST TERMINATE IN AN AREA WHERE GAS FLAMES CANNOT CAUSE DAMAGE OR INJURY TO PERSONNEL. DO NOT TERMINATE THE RELIEF LINE AT A LOCATION ROUTINELY USED BY PERSONNEL SUCH AS WORK AREAS OR PATHWAYS NOR NEAR WINDOWS OR VENTILATION SYSTEM INTAKES.
 - THE SYSTEM MUST BE INSTALLED WITH THE RELIEF VALVE IN A VERTICAL POSITION AND WITH THE CLOSED END OF THE EXPANSION TANK FACING UP.
- ALL PIPING VALVES, & FITTINGS SHOWN DOTTED TO BE SUPPLIED BY CUSTOMER (SHOULD BE SCHED. 80 CARBON STEEL WITH FORGED STEEL FITTINGS FOR CHLORINE LINES).

Germany:
+49 8221 9040
wtger@evoqua.com

United Kingdom:
+44 1732 771777
info.uk.@evoqua.com

USA:
+1 856 507 9000
wtus@evoqua.com

Canada:
+1 905 944 2800
canadacustomerservice@evoqua.com

Singapore:
+65 6830 7100
info.sg@evoqua.com

Australia:
+61 (0) 3 8720 6597
info.au@evoqua.com

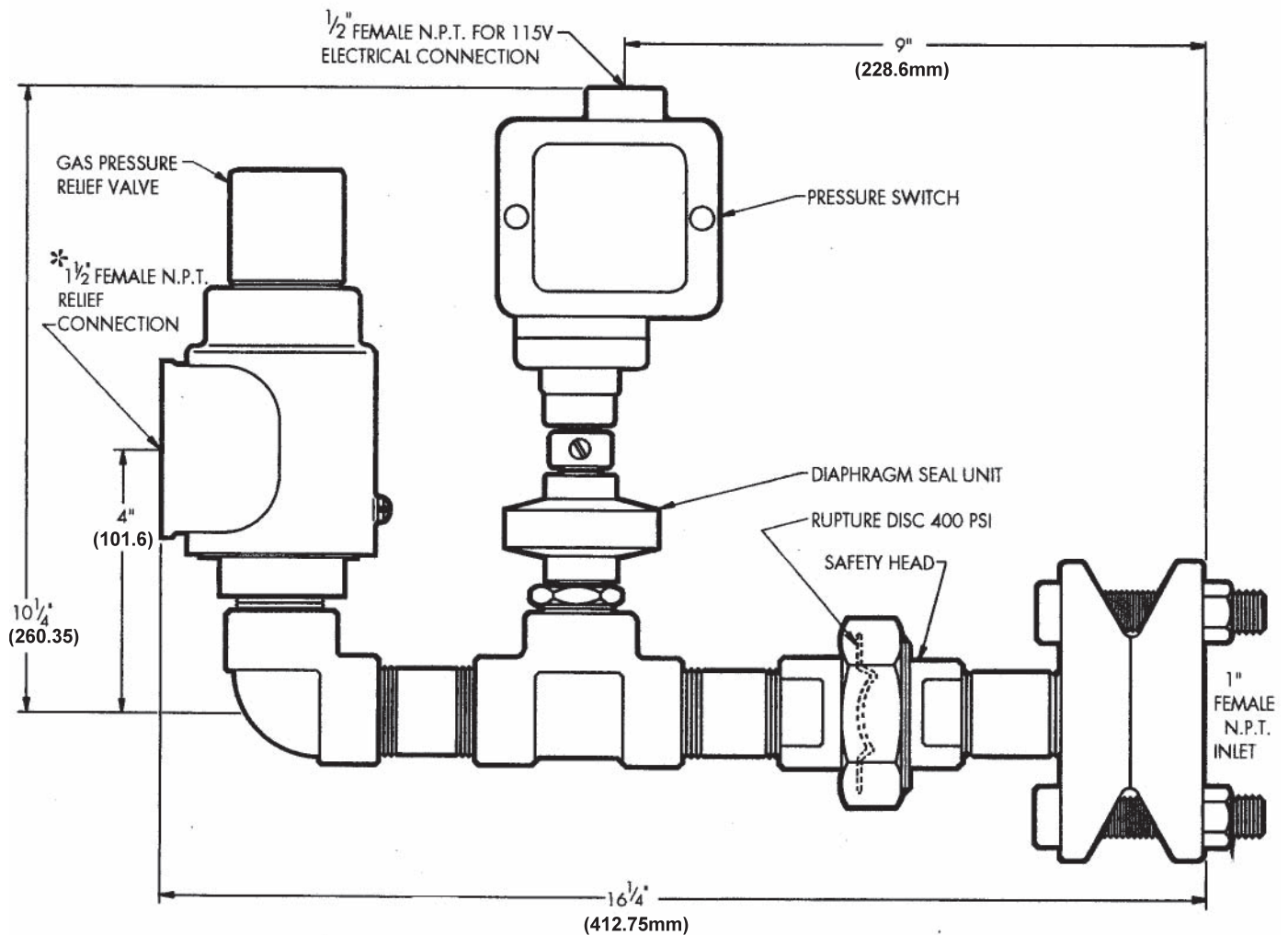
Wallace & Tiernan®

an EVOQUA brand

Dimensions

WT.050.200.100.IE.CN.0714

Series 50-200 Evaporator Evaporator Pressure Relief System



WARNING: ❖ THE RELIEF LINE MUST TERMINATE IN AN AREA WHERE GAS FUMES CANNOT CAUSE DAMAGE OR INJURY TO PERSONNEL. DO NOT TERMINATE THE RELIEF LINE AT A LOCATION ROUTINELY USED BY PERSONNEL SUCH AS WORK AREAS OR PATHWAYS NOR NEAR WINDOWS OR VENTILATION SYSTEM INTAKES. IF AN AREA MEETING THESE REQUIREMENTS IS NOT AVAILABLE, REFER TO THE CHLORINE INSTITUTE MANUAL, SECTION 9.2.2.2, AND PAMPHLET NO. 9 PAR. 4.2 FOR ALTERNATIVE METHOD OF RELIEF DISPOSAL.

NOTE: FOR RELIEF LINE, 1-1/2" SCHEDULE 80 CARBON STEEL PIPE IS RECOMMENDED.

Germany:
+49 8221 9040
wtger@evoqua.com

United Kingdom:
+44 1732 771777
info.uk@evoqua.com

USA:
+1 856 507 9000
wtus@evoqua.com

Canada:
+1 905 944 2800
canadacustomerservice
@evoqua.com

Singapore:
+65 6830 7100
infosg@evoqua.com

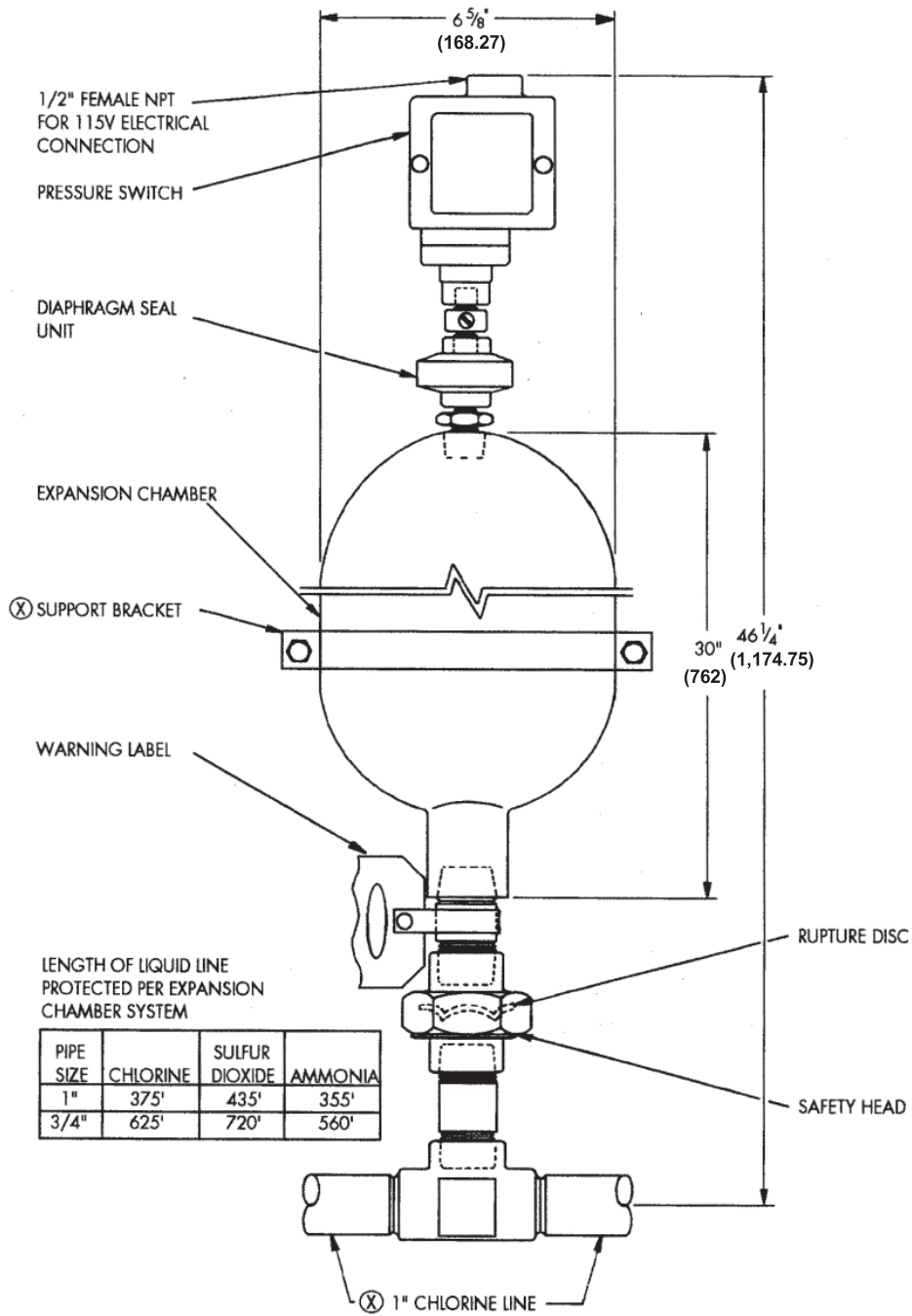
Australia:
+61 (0) 3 8720 6597
info.au@evoqua.com

Wallace & Tiernan[®]
an EVOQUA brand

Dimensions

WT.050.200.102.IE.CN.0714

Liquid Line Pressure Relief System



NOTE: ⊗ NOT FURNISHED BY EVOQUA WATER TECHNOLOGIES.
 ALL PIPING TO BE SEAMLESS CARBON STEEL SCHED. 80
 AND FITTINGS TO BE FORGED STEEL.
 EXPANSION CHAMBER MEETS ASME SEC. VIII, DIV. 1
 CODE FOR UNFIRED PRESSURE VESSELS.
 DESIGN PER CHLORINE INSTITUTE INC. DWG. 136.

Germany:
 +49 8221 9040
 wtger@evoqua.com

United Kingdom:
 +44 1732 771777
 info.uk.@evoqua.com

USA:
 +1 856 507 9000
 wtus@evoqua.com

Canada:
 +1 905 944 2800
 canadacustomerservice
 @evoqua.com

Singapore:
 +65 6830 7100
 infosg@evoqua.com

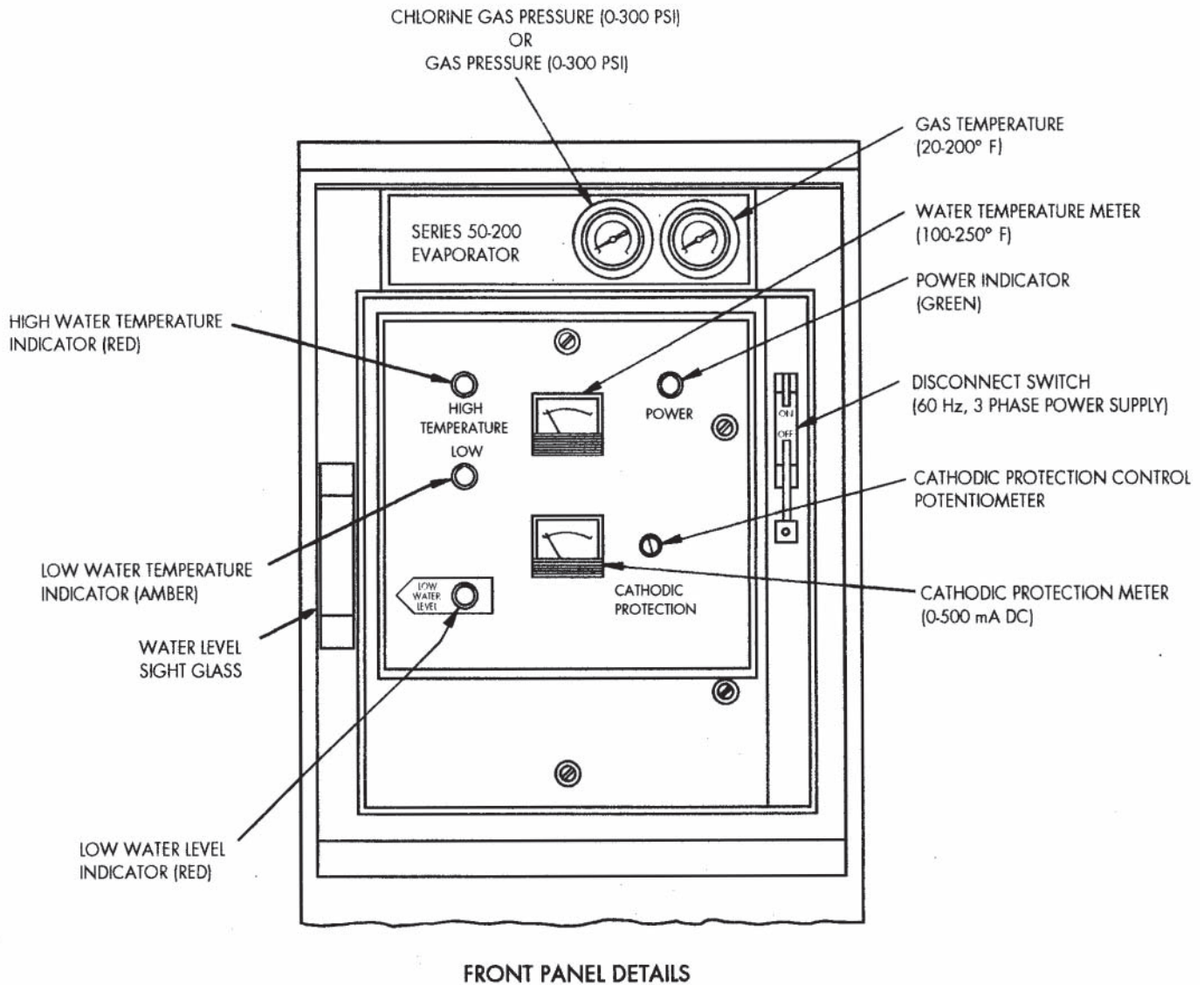
Australia:
 +61 (0) 3 8720 6597
 info.au@evoqua.com

Wallace & Tiernan[®]
 an EVOQUA brand

Dimensions

WT.050.200.104.IE.CN.0714

Series 50-200 Evaporator Control Panel



Germany:
+49 8221 9040
wtger@evoqua.com

United Kingdom:
+44 1732 771777
info.uk.@evoqua.com

USA:
+1 856 507 9000
wtus@evoqua.com

Canada:
+1 905 944 2800
canadacustomerservice
@evoqua.com

Singapore:
+65 6830 7100
infosg@evoqua.com

Australia:
+61 (0) 3 8720 6597
info.au@evoqua.com

Wallace & Tiernan[®]
an EVOQUA brand

Typical Layout

WT.050.200.200.IE.CN.0714